



Thank you for purchasing KOSO GP style speedometer, led night-back-lighted, multi-function in one. easy-wiring. Clear-controlling and easy-using.

**Notice**

1. The lcd meter is apply for DC 12V.
2. for installation, please follow the steps described in manual. any damage caused by wrong installation shall be imputed to the users.
3. don't break or modify the wire terminal. to avoid the short circuit, please don't pull the wire when installing.
4. do not disassemble or change any parts excluding the manual description.
5. the interior examination or maintenance should be executed by our professionals.
6. if you find the needle is auto-reset by itself, please check your battery situation. if the battery can't provide enough voltage, it will cause the meter auto-reset.

**MARK MEANING:**

**NOTE** You could get the installation details from the information behind the mark.

Some processes must be followed to avoid the affection caused by wrong installation.

**WARNING!** Some processes must be followed to avoid damages to yourself or the public.

**CAUTION!** Some processes must be followed to avoid the damage to the vehicle.

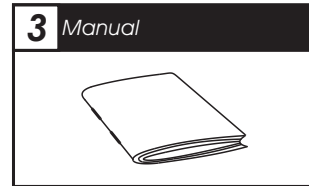
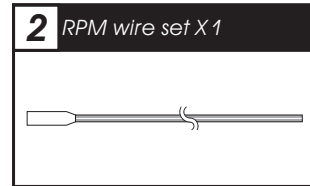
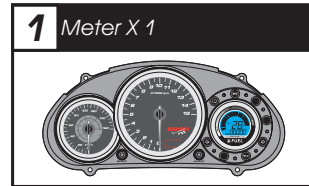


PRESS THE BUTTON ONE TIME



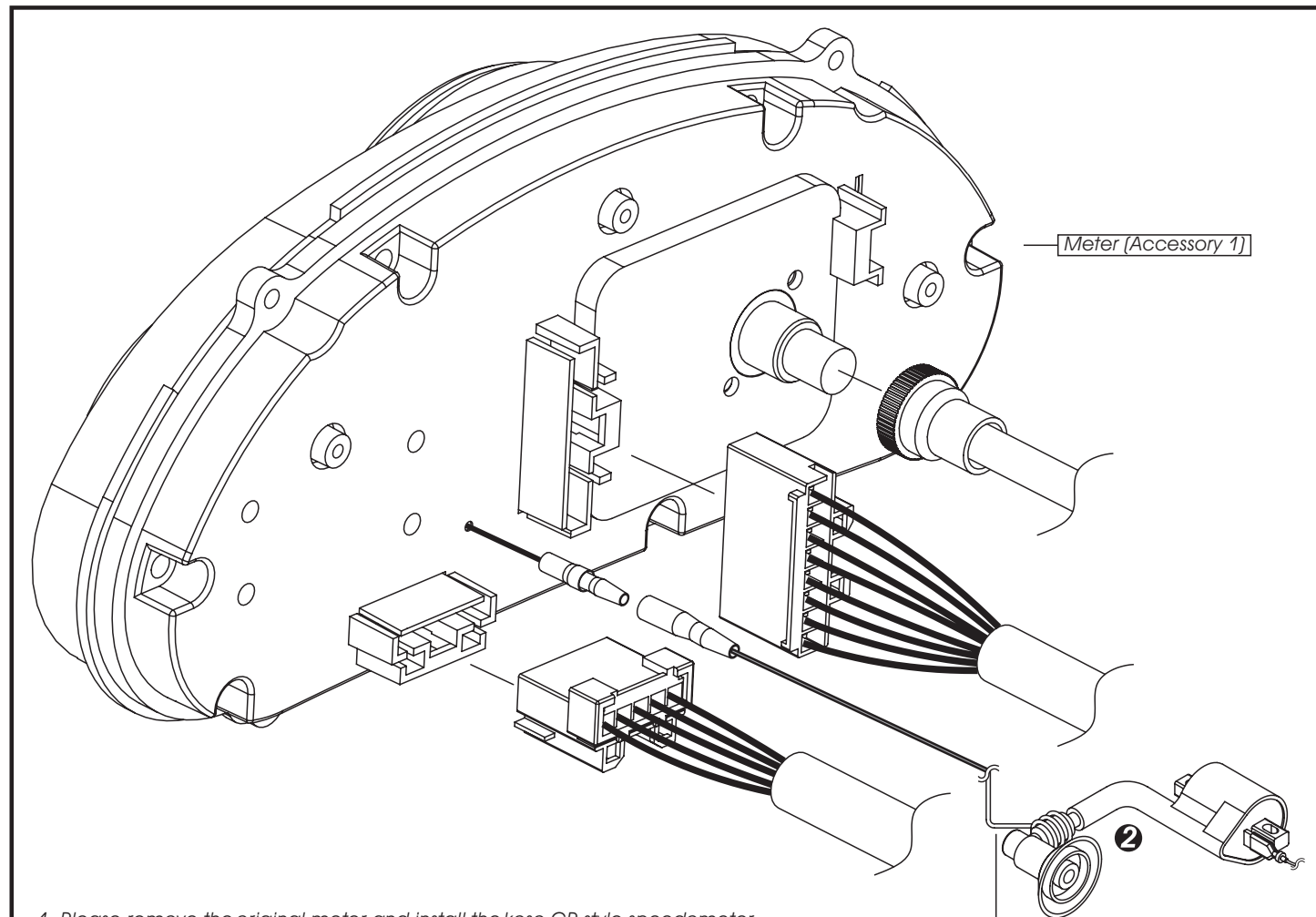
PRESS THE BUTTON 3 SECONDS

**1 Accessory**



**NOTE** Please contact the local distributor if the items you open are not the same, with the above-listed one.

**2 Instruction of wiring-installation**



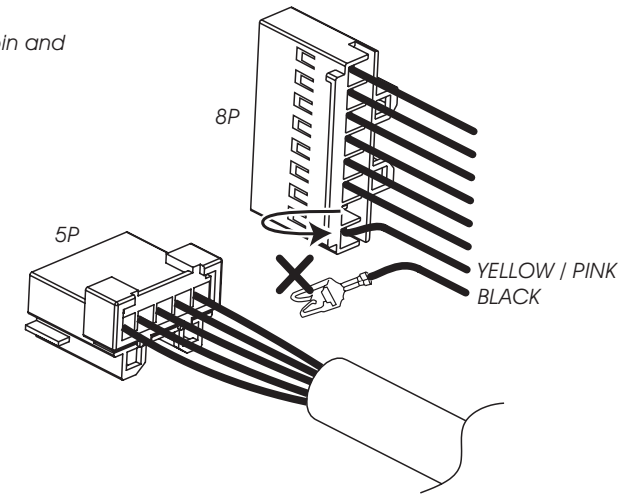
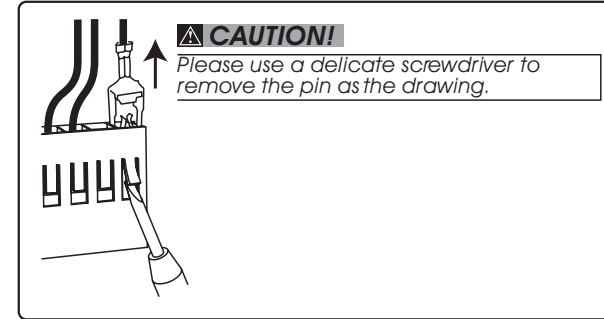
1. Please remove the original meter and install the koso GP style speedometer, then fix the cable wire and meter.
2. Wind the RPM sensor onto the spark plug cap.

**CAUTION!** Just wind the RPM wire onto the spark plug wire, do not connect them! Also we suggest you to replace the spark R in the meantime.

**For RUNNER VXR 200**

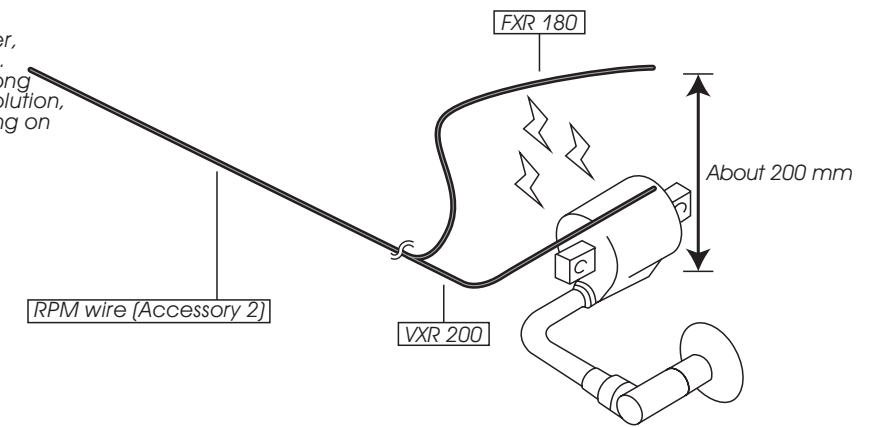
To make the thermometer work on 4-stroke runner, you need to remove the pin and connect it to another position on the connector as the following drawing.

- A. Please remove the black & yellow / pink pins from the 8 pin connector.
- B. Please insert the yellow / pink pin into the original position of the black pin.
- C. Please use the insulating tape to cover the black pin carefully.



**RPM wire- For RUNNER FXR 180 VXR 200**

To make the tachometer works well on 4-stroke Runner, please install the RPM wiring as the following drawing. it is because the signal on the ignition cable is too strong to make the tachometer work improperly at high revolution, so we strongly recommend you to install the RPM wiring on the position for Runner FXR 180 & VXR 200.

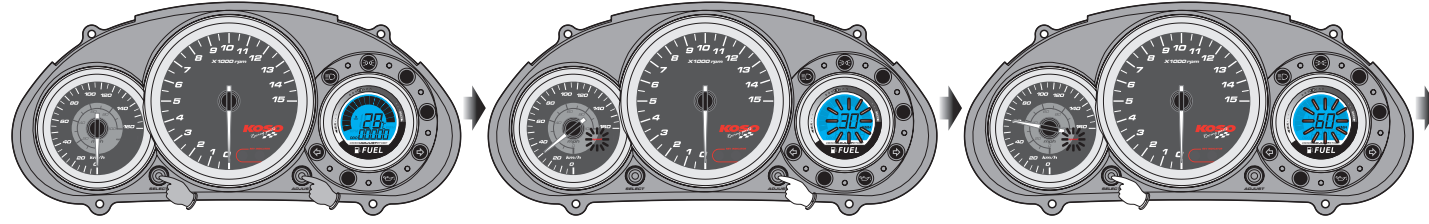


**3 Instruction of function**

- Speedometer**
  - Display range: 0~160 km/h. 0~100 MPH
  - Display unit: km/h.mph.
- Speeding warning light**
  - Setting range: 30~160 km/h.
  - Adjusting unit: 5 km/h.
  - > Regarding the setting, please check 3-1.
- Temperature warning light**
  - Setting range: 60~120 °C.
  - Adjusting unit: 1 °C.
  - > Regarding the setting, please check 3-3.
- Tachometer**
  - Display range: 0~15,000 RPM
  - Display unit: 100 RPM.
- Tachometer warning light**
  - Setting range: 5,000~15,000 RPM.
  - Adjusting unit: 100 RPM.
  - > Regarding the setting, please check 3-2.
- Fuel symbol**
  - display range: 16 levels.
  - The fuel reserve symbol begins to flash if only 3 grids left.
- Temperature**
  - Display range: 0~120 °C.
  - Display unit: 1 °C.
- Odo meter**
  - Display range: 0~99999 km, reset automatically after 99999 km.
  - Display unit: 1 km.
- Trip meter**
  - Display range: 0~999.9 km, reset automatically after 999.9 km.
  - Display unit: 0.1 km.

● The indicator light will differ from different models.

### 3-1 Speeding warning light setting instruction



In main screen, press down the **SELECT** & **ADJUST** button for 3 seconds to enter the speeding warning light setting screen.

**CAUTION!** Please start the setting when the motorcycle is stopped (0 km/h).

**NOTE** Setting range: 30~160 KM/h. Adjusting unit: 5 KM/h.

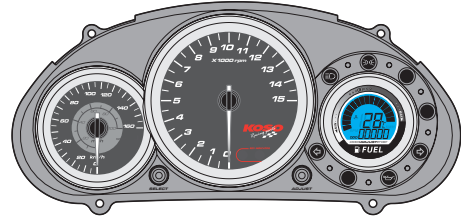
⚠ Now **30** (The number you want to set) & **speed** is flashing!

**NOTE** Hold down the **ADJUST** button to increase the setting number fast.

Press the **SELECT** button 3 times to back the main screen.  
EX. The setting is changed from 30 km/h to 60 km/h.

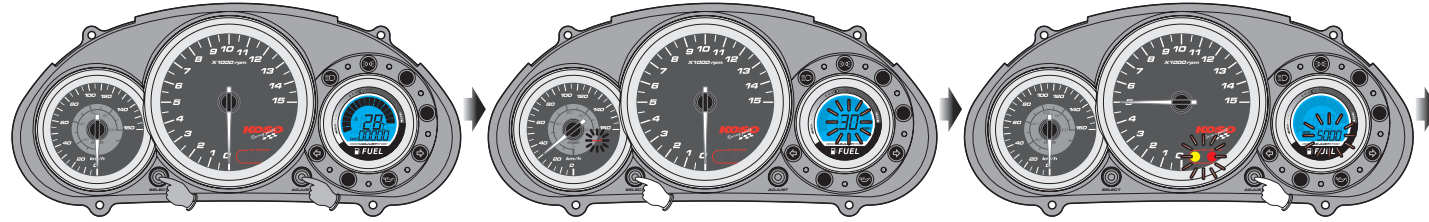
⚠ Now **60** (The number you want to set) & **speed** is flashing!

**NOTE** The setting screen is a circle in order as the following, the speeding warning setting > the tachometer warning setting > the temperature warning setting > main screen.



Main screen.

### 3-2 Tachometer warning light setting instruction



In main screen, press down the **SELECT** & **ADJUST** button for 3 seconds to enter the speeding warning light setting screen.

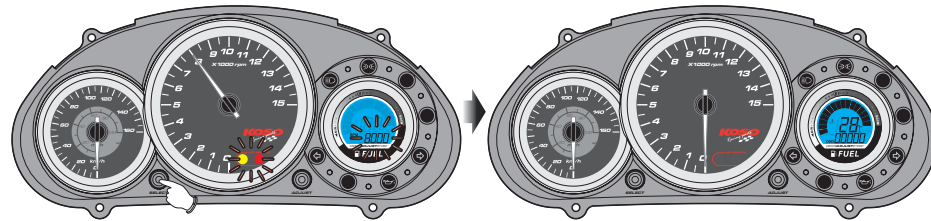
⚠ Now **30** & **speed** is flashing!

**NOTE** Setting range: 5,000~15,000 RPM. Adjusting unit: 100 RPM.

⚠ Now **5,000** (The number you want to set) & **tachometer warning light** is flashing!

Now in setting screen, press the **SELECT** button 1 time to enter the tachometer warning light setting screen.

Press the **ADJUST** button to select the number you want to set.

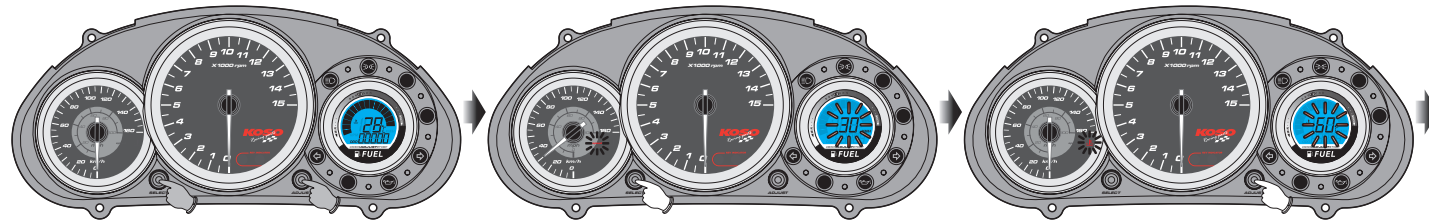


Press the **SELECT** button 2 times to back the main screen.  
EX. The setting is changed from 5,000 RPM to 8,000 RPM.

Main screen.

⚠ Now **8,000** (The number you want to set) & **tachometer warning light** is flashing!

### 3-3 Temperature warning light setting instruction



In main screen, press down the **SELECT** & **ADJUST** button for 3 seconds to enter the speeding warning light setting screen.

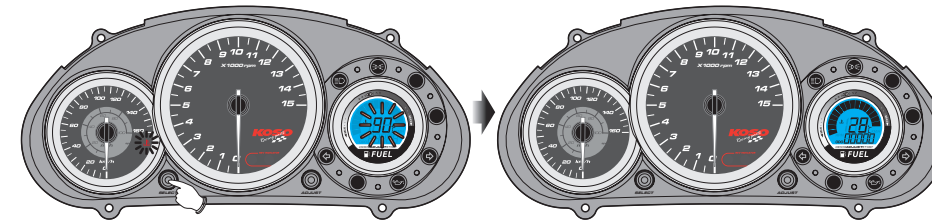
⚠ Now **30** & **speed** is flashing!

**NOTE** Setting range: 60~150 °C. Adjusting unit: 1 °C.

⚠ Now **60** (The number you want to set) & **temperature warning light** is flashing!

Now in setting screen, press the **SELECT** button 2 times to enter the temperature warning light setting screen.

Press THE **ADJUST** button to select the number you want to Set.

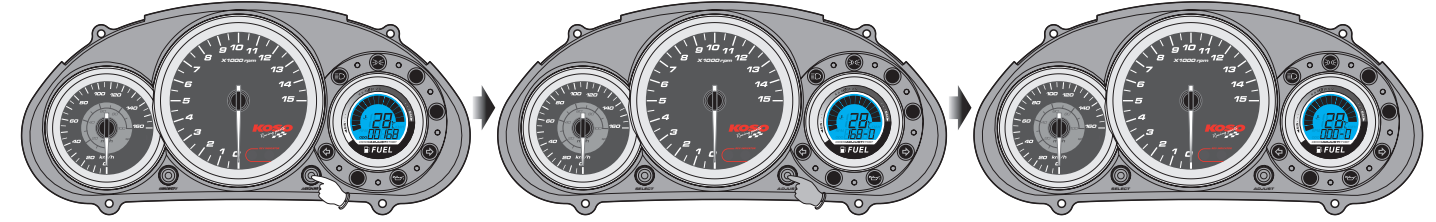


press the **SELECT** button to back the main screen.  
EX. The setting is changed from 60 °C to 90 °C.

Main screen.

⚠ Now **90** (The number you want to set) & **temperature warning light** is flashing!

### 3-4 Trip reset instruction



In main screen, press the **ADJUST** button to switch the odometer to trip meter.

Press down the **ADJUST** button for 3 seconds, and then the trip meter will be reset. Now the trip meter is reset.