



Thank you for purchasing KOSO GP style speedometer, led night-back-lighted, multi-function in one. easy-wiring. Clear-controlling and easy-using.

**Notice**

1. The lcd meter is apply for DC 12V.
2. for installation, please follow the steps described in manual. any damage caused by wrong installation shall be imputed to the users.
3. don't break or modify the wire terminal. to avoid the short circuit, please don't pull the wire when installing.
4. do not disassemble or change any parts excluding the manual description.
5. the interior examination or maintenance should be executed by our professionals.
6. if you find the needle is auto-reset by itself, please check your battery situation. if the battery can't provide enough voltage, it will cause the meter auto-reset.

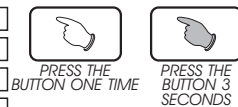
**MARK MEANING:**

**NOTE** You could get the installation details from the information behind the mark.

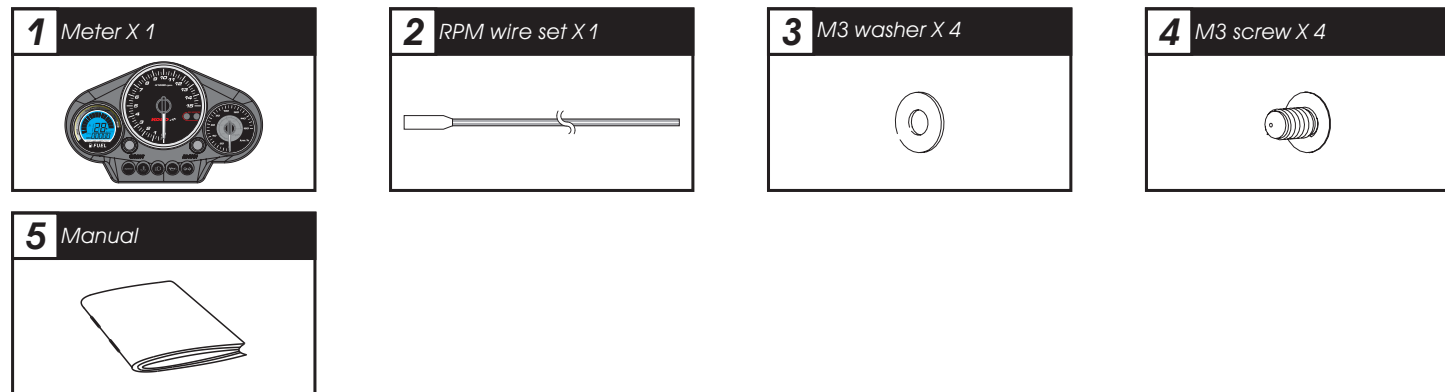
△ Some processes must be followed to avoid the affection caused by wrong installation.

**WARNING!** Some processes must be followed to avoid damages to yourself or the public.

**CAUTION!** Some processes must be followed to avoid the damage to the vehicle.

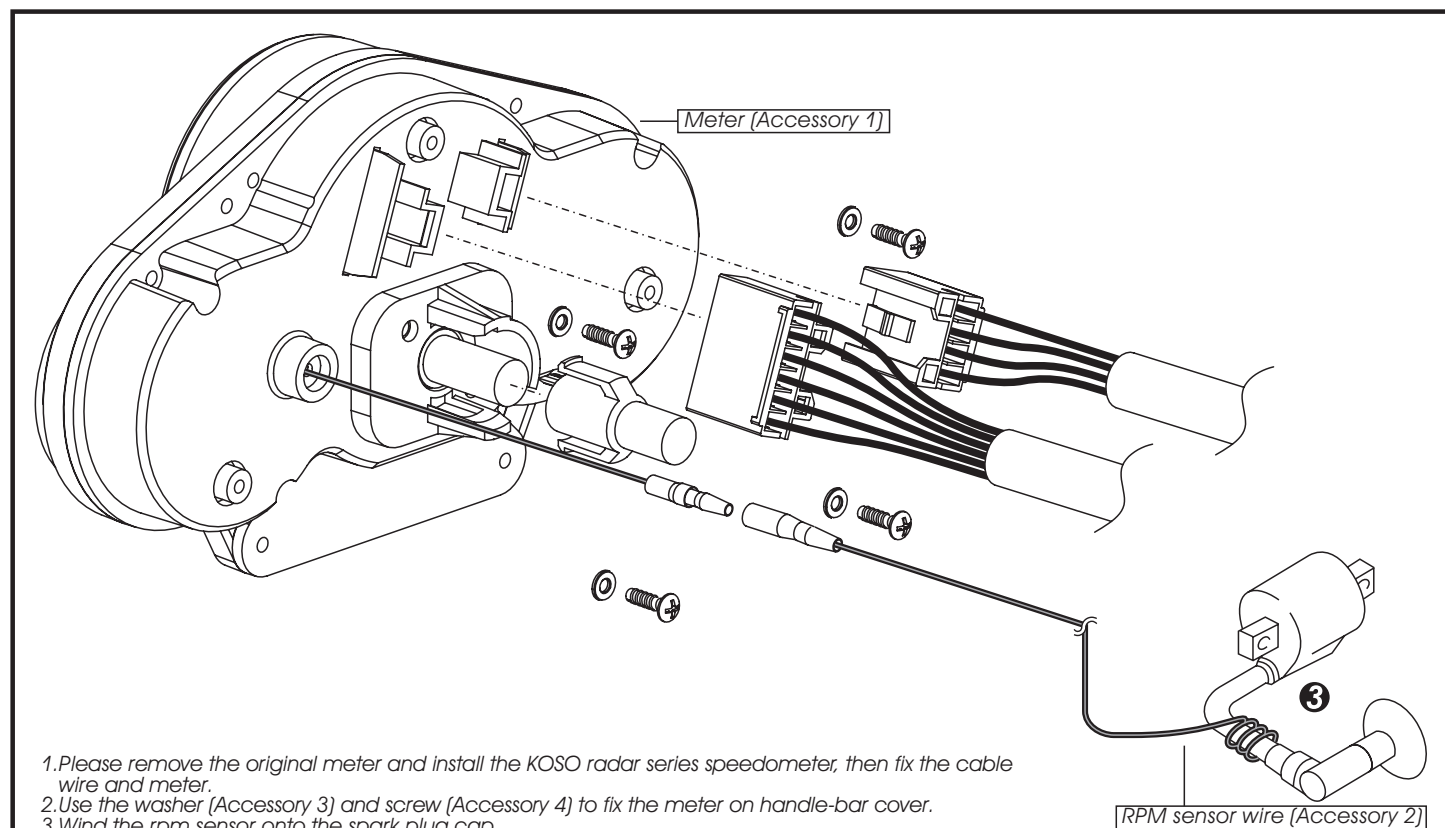


**1 Accessory**



**NOTE** Please contact the local distributor if the items you open are not the same, with the above-listed one.

**2 Wiring installation instructions**



1. Please remove the original meter and install the KOSO radar series speedometer, then fix the cable wire and meter.
2. Use the washer (Accessory 3) and screw (Accessory 4) to fix the meter on handle-bar cover.
3. Wind the rpm sensor onto the spark plug cap.

**CAUTION!** Just wind the rpm wire onto the spark plug wire, do not connect them! Also we suggest you to replace the spark "R" in the meantime.

**3 Function instruction**

**Fuel symbol**

- Display range: 16 levels.
- The fuel reserve symbol begins to flash if only 3 grids left.

**Temperature**

- Display range: 0~120 °C.
- Display unit: 1 °C.

**Tachometer**

- Display range: 0~15000 RPM.
- Display unit: 100 RPM.

**Speedometer**

- display range: 0~160 km/h. 0~100 MPH.
- display unit: km/h / MPH.

**Temperature warning light**

- Setting range: 60~120 °C.
- Adjusting unit: 1 °C.
- > Regarding the setting, please check 4-3.

**Tachometer warning light**

- Setting range: 5000~15000 RPM.
- Adjusting unit: 100 RPM.
- > Regarding the setting, please check 4-2.

**Odo meter**

- Display range: 0~99999 km, reset automatically after 99999 km.
- Display unit: 1 km.

**Trip meter**

- Display range: 0~999.9 km, reset automatically after 999.9 km.
- Display unit: 0.1 km.

**Speeding warning light**

- Setting range: 30~160 km/h.
- Adjusting unit: 5 km/h.
- > Regarding the setting, please check 4-1.

**4-1 Speeding warning light setting instruction.**

In main screen, press down the **SELECT & ADJUST button** for 3 seconds to enter the speeding warning light setting screen.

Press the **ADJUST button** to select the number you want to set. (Now you are in the speeding warning light setting screen)

Press the **SELECT button** 3 times to back the main screen.  
EX. The setting is changed from 30 km/h to 60 km/h.

**CAUTION!** Please start the setting when the motorcycle is stopped (0 km/h).

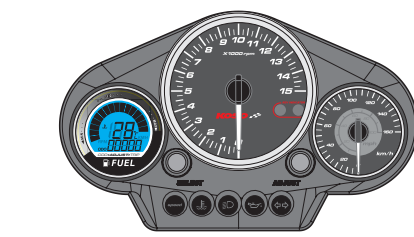
**NOTE** Setting range: 30~160 km/h. Adjusting unit: 5 km/h.

△ Now 30 (The number you want to set) & speed is flashing.

**NOTE** Hold down the **ADJUST button** to increase the setting number fast.

△ Now 60 (The number you want to set) & speed is flashing.

**NOTE** The setting screen is a circle in order as the following, the speeding warning setting > the tachometer warning setting > the temperature warning setting > main screen.



Main screen.

**4-2 Tachometer warning light setting instruction.**

In main screen, press down the **SELECT & ADJUST button** for 3 seconds to enter the speeding warning light setting screen.

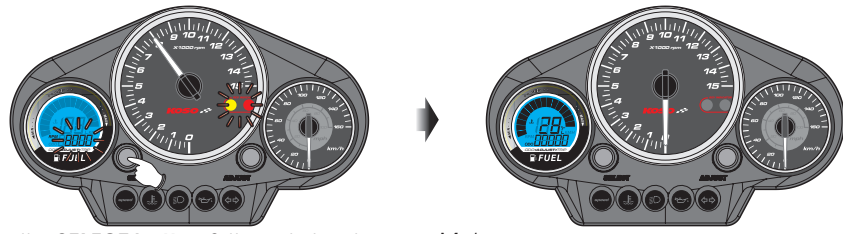
Now in setting screen. Press the **SELECT button** 1 time to enter the tachometer warning light setting screen.

Press the **ADJUST button** to select the number you want to set.

△ Now 30 & speed is flashing.

**NOTE** Setting range: 5000~15000 RPM. Adjusting unit: 100 RPM.

△ Now 5000 (The number you want to set) & tachometer warning light is flashing.

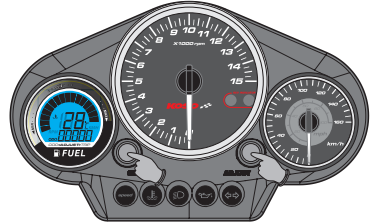


Press the **SELECT** button 2 times to back the main screen.  
 EX. The setting is changed from 5000 RPM to 8000 RPM.

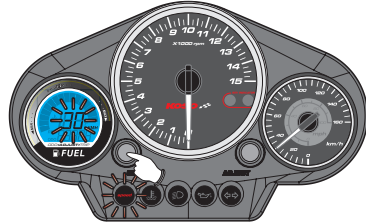
Main screen.

⚠ Now **8000** (The number you want to set) & **tachometer warning light** is flashing.

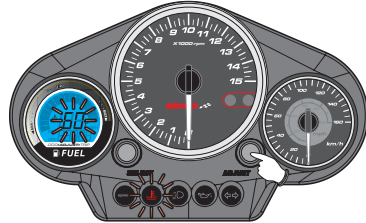
#### 4-3 Temperature warning light setting instruction.



In main screen, press down the **SELECT** & **ADJUST** button for 3 seconds to enter the speeding warning light setting screen.



Now in setting screen, press the **SELECT** button 2 times to enter the temperature warning light setting screen.

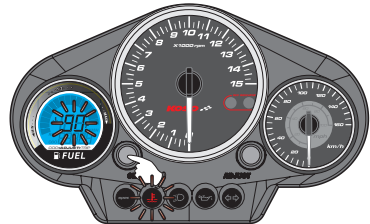


Press the **ADJUST** button to select the number you want to set.

⚠ Now **30** & **speed** is flashing.

**NOTE** Setting range: 60~150 °C.  
 Adjusting unit: 1 °C.

⚠ Now **60** (The number you want to set) & **temperature warning light** is flashing.

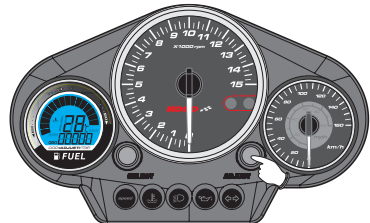


press the **SELECT** button to back the main screen.  
 EX. The setting is changed from 60 °C to 90 °C.

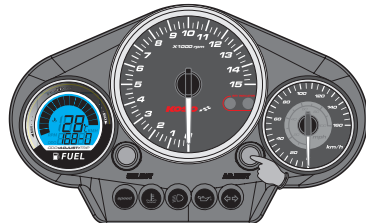
Main screen.

⚠ Now **90** (The number you want to set) & **temperature warning light** is flashing.

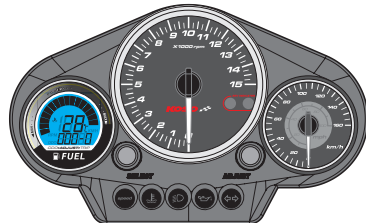
#### 5 Trip reset instruction



In main screen, press the **ADJUST** button to switch the odometer to trip meter.



Press down the **ADJUST** button for 3 seconds, and then the trip meter will be reset.



Now the trip meter is reset.